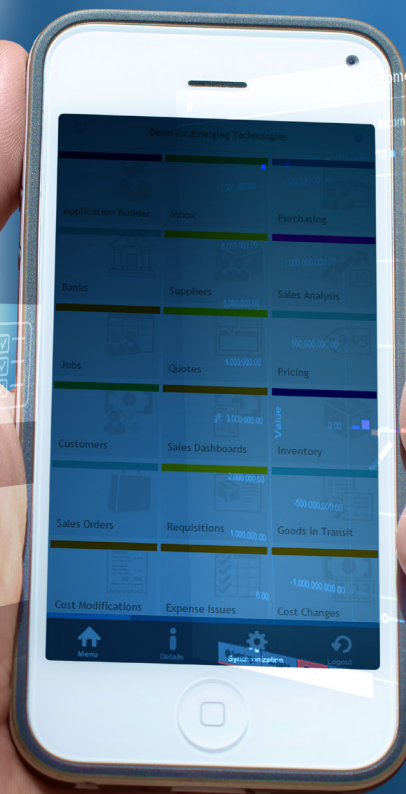




Going Mobile with SYSPRO Espresso



Simplifying your Success

SYSPRO Espresso offers the opportunity for you to bring your business into the 21st Century, taking advantage of mobile technology.

Unlock the world with SYSPRO Espresso mobile solution



Re-think the way you do business

SYSPRO Espresso is a mobile solution that gives you access to your business processes and data as easily as if you were in your office. It enables you to use applications that will work any time, any place, and on any popular device, providing instant and secure access to information about your customers, suppliers, inventory items and other key business information.

Mobile users can tailor the user interface of SYSPRO Espresso applications themselves, without the need for development skills.

In areas where there is no mobile or wireless signal, SYSPRO Espresso enables users to work offline.

Device management, user access, and software deployment are all handled by the SYSPRO Espresso management hub.

Developing mobile applications is simplified using the SYSPRO Espresso platform.

Whether you are an executive, a member of your company's sales force, a factory floor manager or an administrator, SYSPRO Espresso is set to change your life – for the better. Its mobility sets you free, giving you access to all your business information and processes no matter where you are or what device you are using.

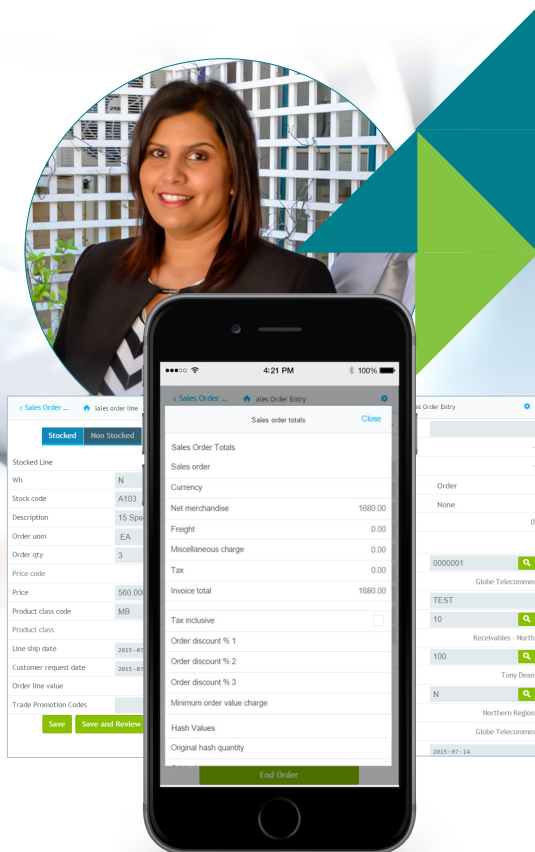
The SYSPRO Espresso Executive



With SYSPRO Espresso business executives now have easy access to their ERP business data and information, enabling them to keep an eye on their business anywhere and at any time:

- **Faster, better informed decisions** because data and information is always easily accessible wherever and whenever
- **Easy to use and understand** – search and retrieve up-to-date, real-time BI information and drill down for more detailed information
- With **simple, intuitive charts**, choose the way you want your information presented
- **All the charts have the same functionality**, so once you learn how to navigate through one chart, he can get maximum value out of all his charts.

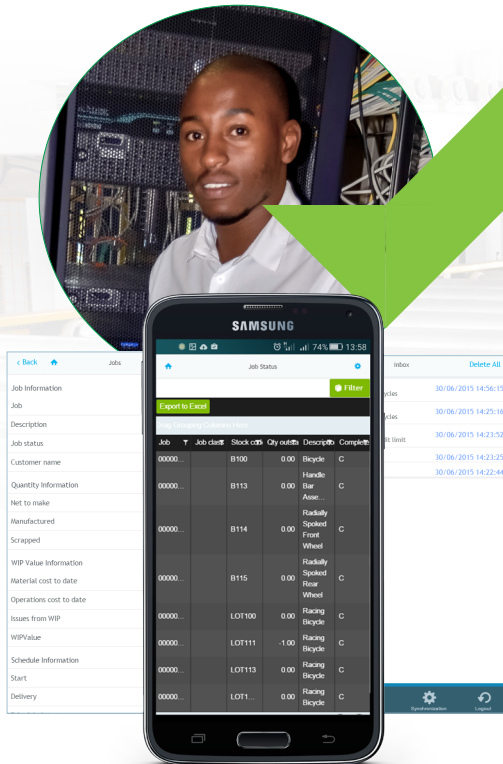
The SYSPRO Espresso Sales Force



SYSPRO Espresso mobile ERP solution enables the sales force provide a faster, more accurate customer service:

- **Take an order** on your smart phone while with a customer, and check if stock is available
- If it is, the customer can confirm the **sales order** by signing on your phone
- Then transmit the order to the warehouse so that the picking and shipping process can begin
- Don't waste time looking for customer sites, as SYSPRO Espresso's **geolocation feature** provides a visual reference map of customer addresses.

The SYSPRO Espresso Factory Floor Manager



SYSPRO Espresso enables improved productivity with supplier and inventory data at your fingertips:

- Monitor the **status of orders, availability of stock, and jobs in production**
- Improved productivity with suppliers and readily **accessible inventory data** such as **receipting stock in and out, and job requisitions** on a supplier
- Keep everyone in your supply chain up-to-date by sending alerts via a **push notification**
- Take a photograph of the item and attach it to the order.

The SYSPRO Espresso Administrator



Empower your administrators with SYSPRO Espresso mobile solutions by providing a relevant and personalized work environment, and the assurance that they are working within a secure system:

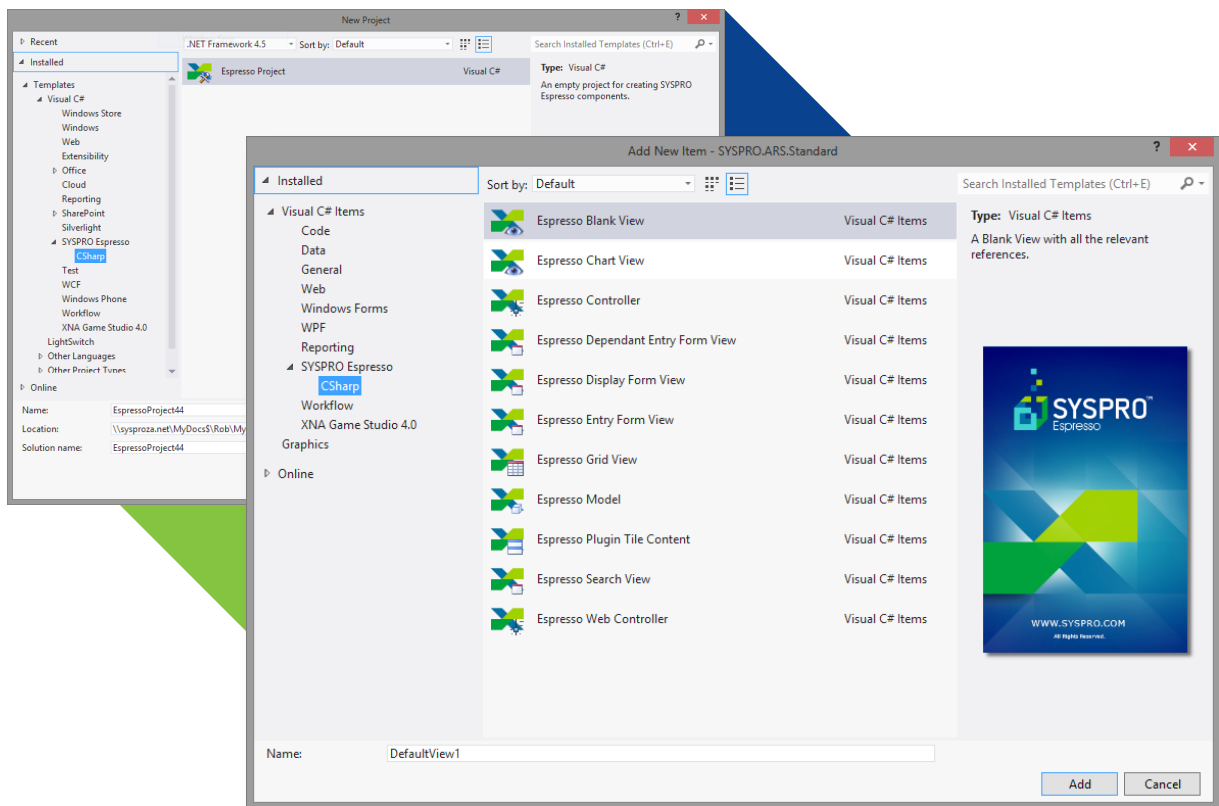
- **Easy to tailor** your experience by **configuring menus** and applications by company, role and user
- The **encrypted communication** between devices provides peace of mind that you are working within a **secure system** because, unlike other mobile deployments, the SYSPRO Espresso framework has a **built-in security** and a **management tool** to control which devices and which users have which applications
- Check **cash flow** figures to see how current work will impact the business – anytime, anywhere and on the device of your choice.

SYSPRO Espresso – meeting the needs of mobile deployment



- **Device and platform independent**
SYSPRO Espresso can be used on all major mobile device operating systems, and is compatible on all web browsers that support HTML5
- **Users can personalize their own application user interface**
SYSPRO Espresso mobile applications can be customized by the user on their mobile device by dragging and dropping different screen components
- **Real-time or offline access**
Users can be productive on SYSPRO Espresso even when they are not connected by Wifi or mobile signal. Any transactions made when offline can be synchronized once the device is reconnected
- **Secure communication**
Transmission between mobile devices and the SYSPRO server are encrypted using SSL secure communication standards
- **Enables alerts to be sent via push notifications**
When a user receives an alert via a push notification, by tapping on the icon they can be directed straight to the alert issue without having to navigate to it
- **Uses active tile technology**
Instead of a static image for an icon or tile, the image can be show data, charts or feeds that are dynamically updated
- **Multi-lingual support**
- **Integrated user/device access, application management, security**
Administrators on the SYSPRO system can configure menus and applications by company, role and user
- **Mobile applications packaged with Espresso, and via the SYSPRO App Store**
SYSPRO Espresso comes standard with a number of mobile applications. Other apps can be found on the SYSPRO App Store
- **A single app for all applications**
Only one app need to be downloaded from the SYSPRO App Store. Once a mobile user logs in their menu system gives them access to any applications they are allowed to use. As new apps become available they can be pushed to the user's device, removing the need to download another app
- **Development platform that supports deployment to any device**
A free plugin to Microsoft Visual Studio 2012 allows developers to build custom applications using one piece of source code that can be deployed to all major mobile device platforms.
- **Mobile applications that can address native device capabilities**
Native device capabilities such as camera and GPS are supported with SYSPRO Espresso. In addition, an ink component can be added to allow capturing of signatures or drawing of simple diagrams.

SYSPRO Espresso – making mobile development easy



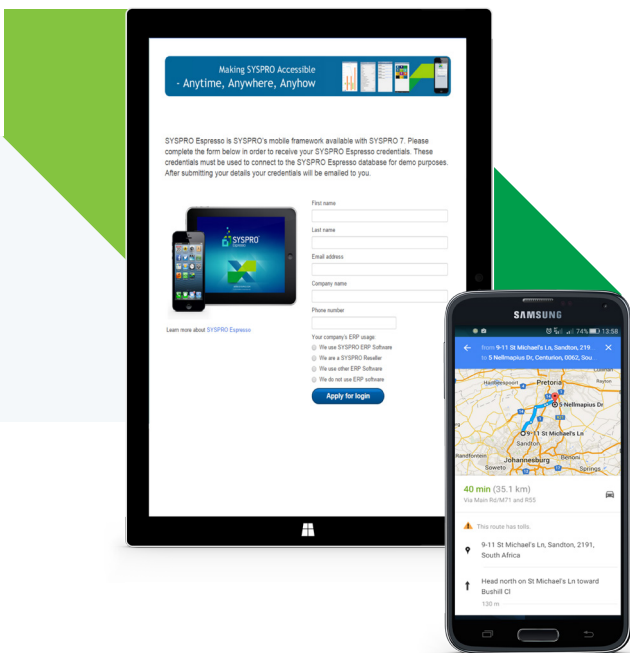
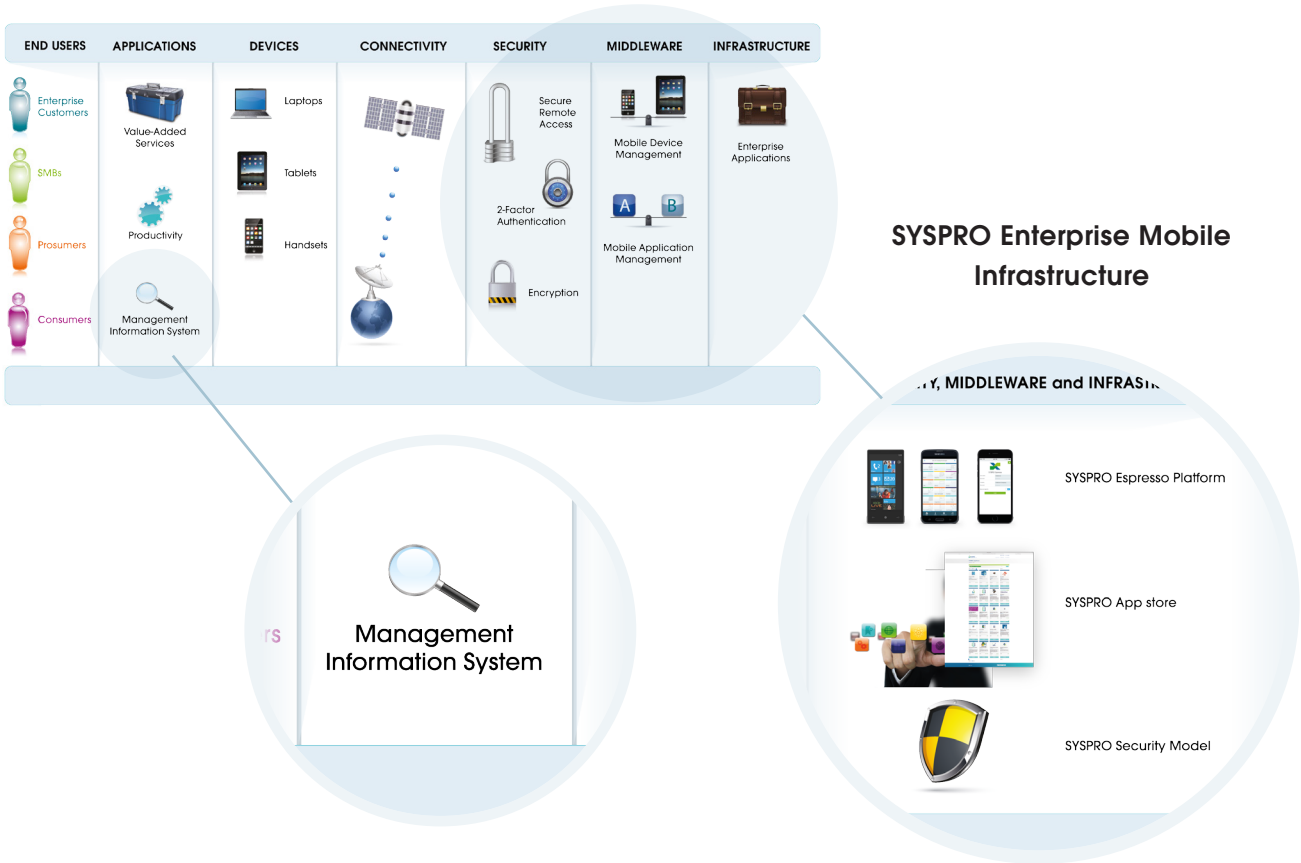
SYSPRO Espresso lowers the time and cost of developing and deploying mobile applications by providing a development environment that is platform- and device-agnostic.

Reasons to develop on the SYSPRO Espresso platform:

- **Leverage existing skills** – use your existing web development skills (for example, HTML, C#) to create mobile business solutions without worrying about the requirements of each specific make and device. Write the app once and let it run on any mobile device, including a desktop and on Windows® 8
- **Empower your users** – drive adoption of your mobile solution by letting your users choose whatever device they want, with the assurance that they will have the same user experience
- **Simplify development** – use the SYSPRO Espresso component architecture to simplify development and speed up deployment
- **Promote** – showcase your mobile apps by promoting them globally on the SYSPRO App Store
- **Integration** – integrate messaging, device sensors (GPS, camera, microphone), and notifications to deliver state-of-the-art mobile apps.

SYSPRO Espresso mobile infrastructure

Enterprise Mobile Infrastructure



SYSPRO Espresso technology

- Rendering agent HTML 5 (Client):
 - Cross-browser
 - Cross-platform
- Generating agent Microsoft ASP.NET MVC 4.5
 - Model and View development infrastructure
- Data Access Layer
 - SYSPRO e.net Solutions
- Deployment agent
 - Adobe PhoneGAP
- Access to phones native capabilities
 - Native applications for each device

Business benefits of adopting the SYSPRO Espresso mobile solution

- **Increased productivity and better decisions** – search and retrieve up-to-date information whenever you need
- **Empowered employees** – work and access secure information anywhere, any time
- **Improved customer engagement** – provide real-time sales and service information
- **Streamlined supply chain** – supplier and inventory data at your fingertips
- **Tailored experience** – customize the look and experience of SYSPRO Espresso applications
- **Always accessible** – even when not connected, SYSPRO Espresso applications work offline (synchronize later when you have a connection)
- **Built-in security and management** – control and manage any staff or device changes within your mobile policy. Unlike other mobile deployments, the SYSPRO Espresso framework has built-in security and a management tool to control which devices and which users have which applications.

SYSPRO Espresso – a ground-breaking platform for the mobile world




- ✓ Any device, any platform, any time, any where
- ✓ Non-IT customization - by user by device
- ✓ Offline access
- ✓ Powerful charting engine, BI, high-level queries
- ✓ Bring Your Own Device (BYOD) security
- ✓ Unique Development platform
- ✓ Extensive library of applications

About SYSPRO

SYSPRO is an internationally-recognized, leading provider of enterprise business solutions. Formed in 1978, SYSPRO was one of the first software vendors to develop an Enterprise Resource Planning (ERP) solution. Today, SYSPRO is a global company, represented on six continents and by more than 1600 channel and support partners. Fifteen thousand licensed companies across a broad spectrum of industries in over 60 countries trust SYSPRO as the platform on which to manage their business processes.

Customer focus is a core component of SYSPRO's corporate culture and one of the key reasons for SYSPRO's strong leadership position in the enterprise application market. By focusing on people and building lasting relationships with customers and partners, SYSPRO consistently excels at guiding customers through all aspects of their adoption and ongoing usage. The aim is to deliver world-class solutions that give customers the control, insight and agility they need for a competitive advantage in a global economy. As such, SYSPRO provides a unique combination of robust, scalable technologies that ensure minimal risk and a high return on investment.

SYSPRO continually develops remarkable software that simplifies operational effectiveness and keeps customers in control of their businesses. Our vision is focused on meeting customer needs today and in the future.



SYSPRO provides a unique combination of robust, scalable solutions that ensure minimal risk and a high return on investment.



Africa and the Middle East

SYSPRO Africa
Block A
Sunninghill Place
9 Simba Road
Sunninghill
Johannesburg
2191
South Africa
Tel: +27 (0) 11 461 1000
Email: info@za.syspro.com

Canada

SYSPRO Canada
4400 Dominion Street
Suite 215
Burnaby (Vancouver)
British Columbia
Canada
V5G 4G3
Tel: +1 (604) 451 8889
Toll free: +1 888 259 6666
Email: info@ca.syspro.com

USA & Americas

SYSPRO USA and Americas
959 South Coast Drive, Suite 100
Costa Mesa
California
92626
USA
Tel: +1 (714) 437 1000
Toll free: +1 800 369 8649
Email: info@us.syspro.com

Asia Pacific

SYSPRO Oceania
Suite 1102, Level 11
201 Miller Street
North Sydney NSW 2060
Australia
Tel: +61 (2) 9870 5555
Toll free: +1 300 882 311
Email: info@au.syspro.com

SYSPRO Asia
8 Eu Tong Sen Street
#19-91 The Central
Singapore
059818
Tel: +65 6256 1921
E-mail: info@sg.syspro.com

UK & Europe

SYSPRO Europe
Baltimore House
50 Kansas Avenue
Salford Quays
Manchester
United Kingdom
M50 2GL
Tel: +44 161 876 4498
Email: info@eu.syspro.com

www.syspro.com

V04 Copyright © 2015 SYSPRO. All rights reserved.

All brand and product names are trademarks or registered trademarks of their respective holders. No part of this material may be reproduced or transmitted in any form or by any means, electronic or mechanical, including photocopying, recording, or by any information storage or retrieval system, without prior written permission from the publisher.