



SYSPRO Requirements Planning

SYSPRO Requirements Planning assists you in managing the balance between supply and demand. The Requirements Planning module uses projected and actual demand and supply to assist in planning and creating realistic production, purchasing and supply transfer schedules. It also identifies capacity constraints and maintains optimal stock holdings in a multi-site and multi-warehouse environment. Material Requirements Planning (MRP) helps reduce inventory, increase manufacturing productivity, and ultimately facilitates cash flow.

Customer quotes with a high probability of becoming orders can be easily included in your MRP, giving you a more accurate assessment of your future planning and financial picture.

The Requirements Planning system (with its online Material Planning System and Job, Purchase Order, and Supply Chain Review programs) enables straightforward conversions of the suggestions from the Requirements Calculation results to live data. It is a bucket-less system which provides the facilities to run 'what-if' scenarios. Variable planning intervals and user-defined planning horizons offer further flexibility.

Dynamic capacity profiling, load leveling and single-level forward finite scheduling enable you to assess the impact of suggested jobs on your existing capacity loads.

The benefits of Requirements Planning

- Effective planning of material and production capacity to satisfy demand
- Identification of critical resources with rough-cut capacity planning
- Detailed pegging information available queries and reports
- Critical resource queries facilitate effective planning
- 'Bucketless', date-driven planning environment for greater accuracy

Requirements Planning features

- Create build schedules from Master Production Schedule (MPS) suggestions
- Calculate material and capacity requirements under an infinite or finite capacity assumption
- Create actual purchase orders, work orders or requisitions from suggestions
- Generate supply chain transfers from suggestions for transfers between warehouses
- Accept suggested changes to existing purchase orders and jobs based on changes in demand
- Define a gross requirements rule per item for the calculation of MPS-suggested quantities
- Define planning frequencies, lead times and planning horizons for time fence indicators

- Query MRP calculation results with pegging details to view sources of demand
- View capacity load in a bar chart or report form
- Use time fence indicators to assess the viability of changing an existing materials plan
- View and report planning details in user-defined time periods
- Create and amend purchase orders and jobs based on suggestions, with powerful, on-screen reviews
- Review and update live blanket purchase orders which require corrective action to meet planned demand
- Review excess stock and shortages based on minimum and maximum inventory levels calculated in Inventory Optimization. Stock is moved from one warehouse to another by creating suggested supply chain transfers Test materials plans before updating the live system with 'snapshot' functionality
- Control inventory levels by identifying potential over-supply
- Avoid bottlenecks by reviewing average queue times
- Manage lot traceable items, including tracking expiration dates
- Quickly identify overloaded work centers

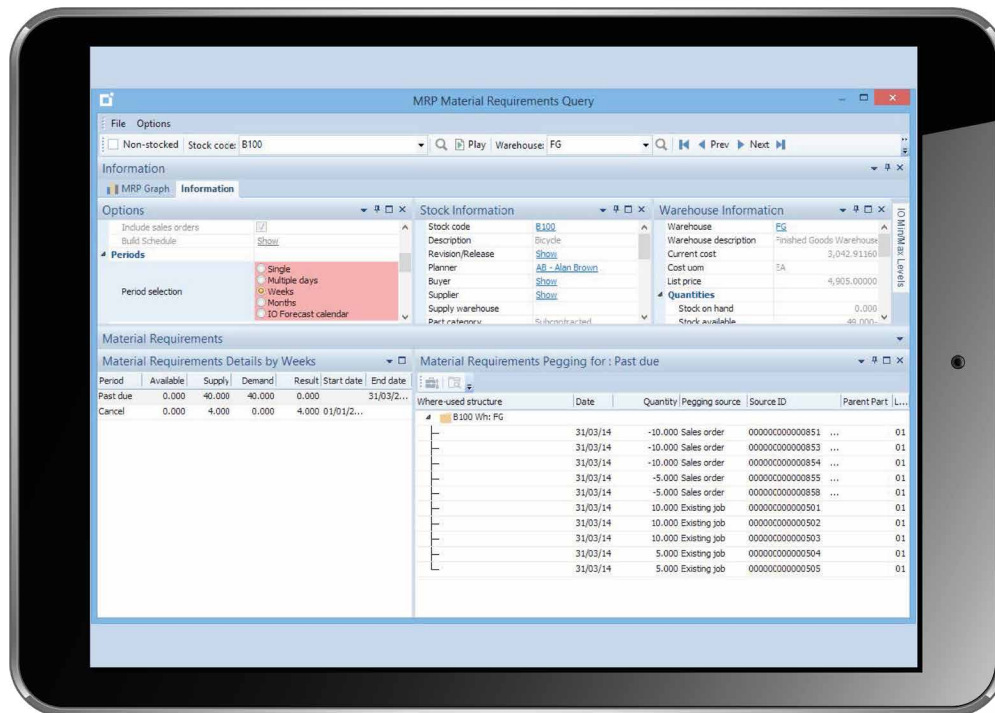
Integration with SYSPRO

Integrates with the following modules:

- Bill of Materials
- Inventory (Essential)
- Inventory Families and Groupings
- Inventory Forecasting
- Purchase Orders
- Quotations
- Sales Orders
- Work in Progress

Audit trails and reporting

- Comprehensive reports include Capacity Loading, Material Requirements, Suggested Work Orders, Suggested Purchase Orders, Pegging and Resource Requirements
- Action Reports include:
 - Build Schedule
 - Capacity
 - Forecast
 - Job
 - Purchase Order
 - Sales Order
 - Safety Stock
- Calculates projected available and available to promise
- Provides review of late supplies



Contact Us

To learn more about our company, products and services visit syspro.com

